



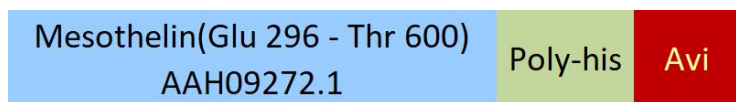
Synonym

MSLN,Mesothelin,MPF

Source

Biotinylated Human Mesothelin (296-600), His,Avitag(MSN-H82E7) is expressed from human 293 cells (HEK293). It contains AA Glu 296 - Thr 600 (Accession # [AAH09272.1](#)).
Predicted N-terminus: Glu 296

Molecular Characterization



This protein carries a polyhistidine tag at the C-terminus, followed by an Avi tag (Avitag™).

The protein has a calculated MW of 37.8 kDa. The protein migrates as 8 kDa and 42-50 kDa when calibrated against [Star Ribbon Pre-stained Protein Marker](#) under reducing (R) condition (SDS-PAGE) due to glycosylation.

Labeling

Biotinylation of this product is performed using Avitag™ technology. Briefly, the single lysine residue in the Avitag is enzymatically labeled with biotin.

Protein Ratio

Passed as determined by the HABA assay / binding ELISA.

Endotoxin

Less than 0.1 EU per µg by the LAL method.

Purity

>90% as determined by SDS-PAGE.
>90% as determined by SEC-MALS.

Formulation

Lyophilized from 0.22 µm filtered solution in PBS, pH7.4 with trehalose as protectant.

Contact us for customized product form or formulation.

Reconstitution

Please see Certificate of Analysis for specific instructions.

For best performance, we strongly recommend you to follow the reconstitution protocol provided in the CoA.

Storage

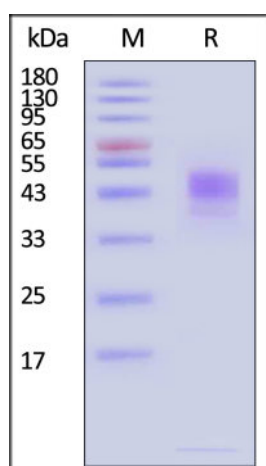
For long term storage, the product should be stored at lyophilized state at -20°C or lower.

Please avoid repeated freeze-thaw cycles.

This product is stable after storage at:

- -20°C to -70°C for 12 months in lyophilized state;
- -70°C for 3 months under sterile conditions after reconstitution.

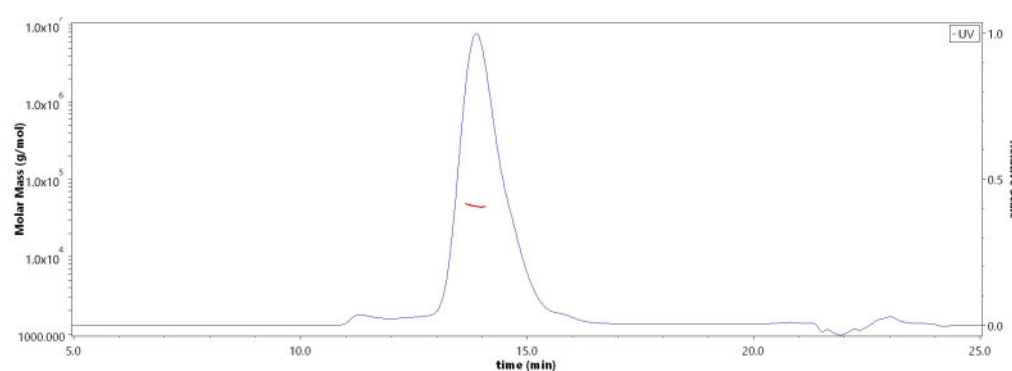
SDS-PAGE



Biotinylated Human Mesothelin (296-600), His,Avitag on SDS-PAGE under reducing (R) condition. The gel was stained with Coomassie Blue. The purity of the protein is greater than 90% (With [Star Ribbon Pre-stained Protein Marker](#)).

Bioactivity-ELISA

SEC-MALS



The purity of Biotinylated Human Mesothelin (296-600), His,Avitag (Cat. No. MSN-H82E7) is more than 90% and the molecular weight of this protein is around 35-53 kDa verified by SEC-MALS.

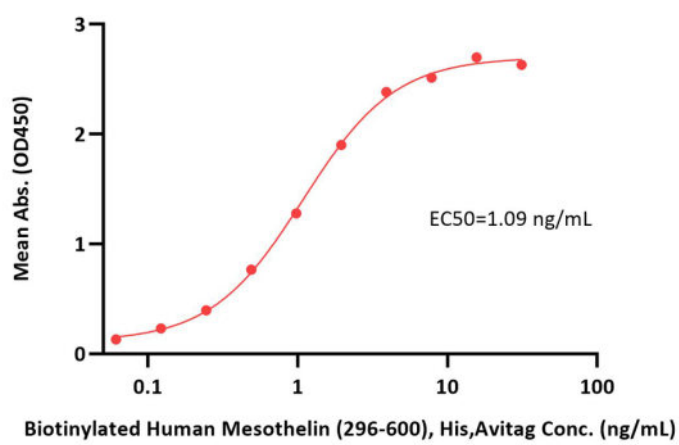
[Report](#)

Discounts, Gifts,
and more!





Biotinylated Human Mesothelin (296-600), His,Avitag ELISA
0.1 µg of Monoclonal Anti-Human MSLN Antibody, Human IgG1 per well



Immobilized Monoclonal Anti-Human MSLN Antibody, Human IgG1 at 1 µg/mL (100 µL/well) can bind Biotinylated Human Mesothelin (296-600), His,Avitag (Cat. No. MSN-H82E7) with a linear range of 0.1-4 ng/mL (QC tested).

Background

Mesothelin (MSLN) is also known as CAK1 antigen, Pre-pro-megakaryocyte-potentiating factor, which belongs to the mesothelin family. Mesothelin / MSLN can be proteolytically cleaved into the following two chains by a furin-like convertase: Megakaryocyte-potentiating factor (MPF) and the cleaved form of mesothelin. Both MPF and the cleaved form of mesothelin are N-glycosylated. Mesothelin / MSLN can interact with MUC16. The membrane-anchored forms of MSLN may play a role in cellular adhesion. MPF potentiates megakaryocyte colony formation in vitro.

Clinical and Translational Updates

Discounts, Gifts,
and more!

