



Synonym

LAG3,CD223,FDC

Source

Human LAG-3 / CD223 Protein, His Tag(LA3-H52H3) is expressed from human 293 cells (HEK293). It contains AA Leu 23 - Leu 450 (Accession # [P18627-1](#)).

Predicted N-terminus: Leu 23

Molecular Characterization

LAG-3(Leu 23 - Leu 450)
P18627-1 Poly-his

This protein carries a polyhistidine tag at the C-terminus.

The protein has a calculated MW of 48.1 kDa. The protein migrates as 58-65 kDa when calibrated against [Star Ribbon Pre-stained Protein Marker](#) under reducing (R) condition (SDS-PAGE) due to glycosylation.

Endotoxin

Less than 1.0 EU per µg by the LAL method.

Purity

>90% as determined by SDS-PAGE.

>90% as determined by SEC-MALS.

Formulation

Lyophilized from 0.22 µm filtered solution in PBS, pH7.4 with trehalose as protectant.

Contact us for customized product form or formulation.

Reconstitution

Please see Certificate of Analysis for specific instructions.

For best performance, we strongly recommend you to follow the reconstitution protocol provided in the CoA.

Storage

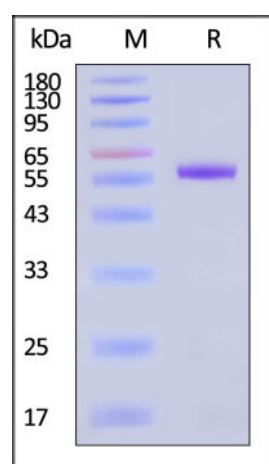
For long term storage, the product should be stored at lyophilized state at -20°C or lower.

Please avoid repeated freeze-thaw cycles.

This product is stable after storage at:

- -20°C to -70°C for 12 months in lyophilized state;
- -70°C for 3 months under sterile conditions after reconstitution.

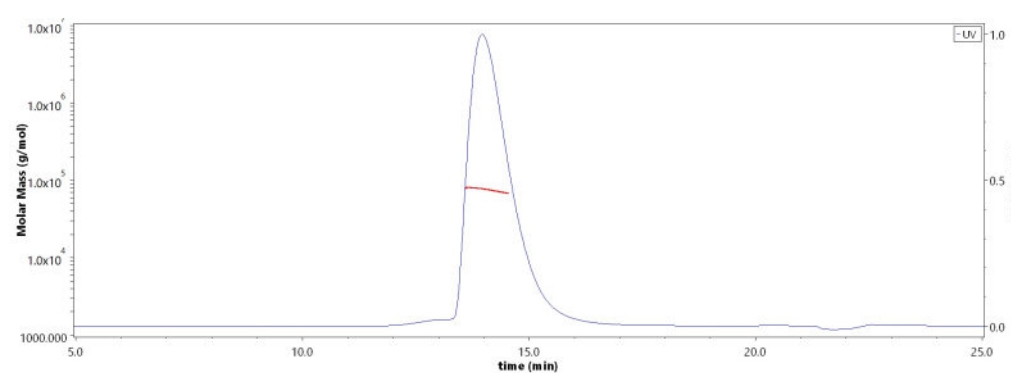
SDS-PAGE



Human LAG-3 / CD223 Protein, His Tag on SDS-PAGE under reducing (R) condition. The gel was stained with Coomassie Blue. The purity of the protein is greater than 90% (With [Star Ribbon Pre-stained Protein Marker](#)).

Bioactivity-ELISA

SEC-MALS

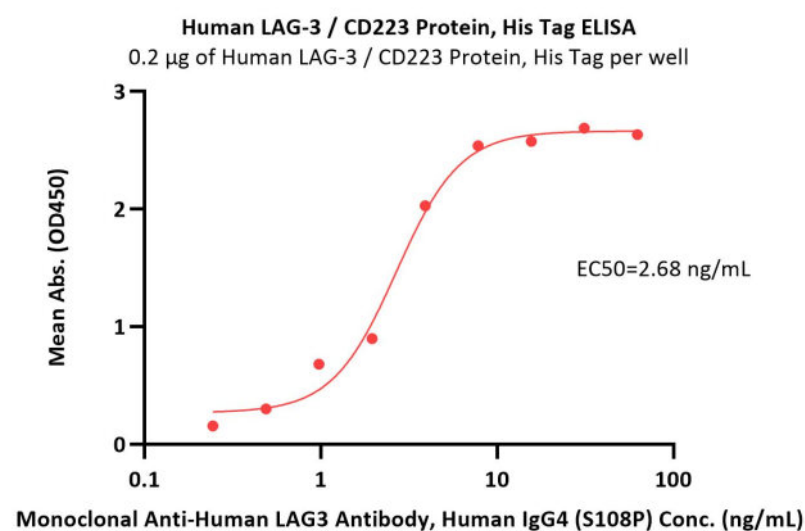
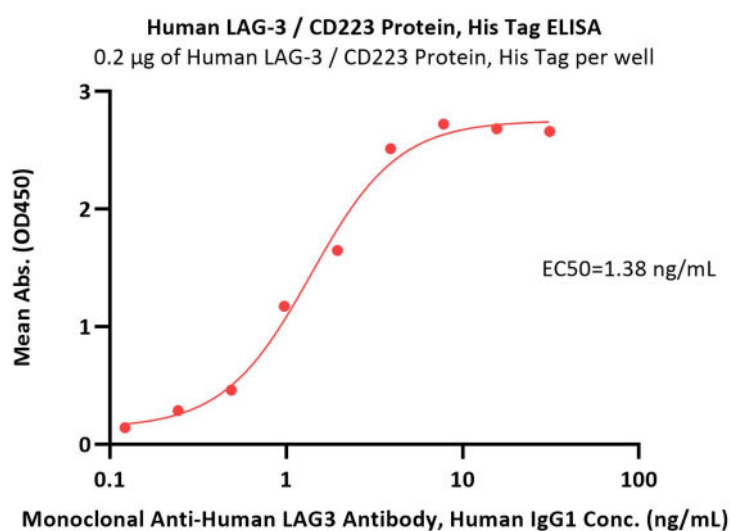


The purity of Human LAG-3 / CD223 Protein, His Tag (Cat. No. LA3-H52H3) is more than 90% and the molecular weight of this protein is around 60-85 kDa verified by SEC-MALS.

[Report](#)

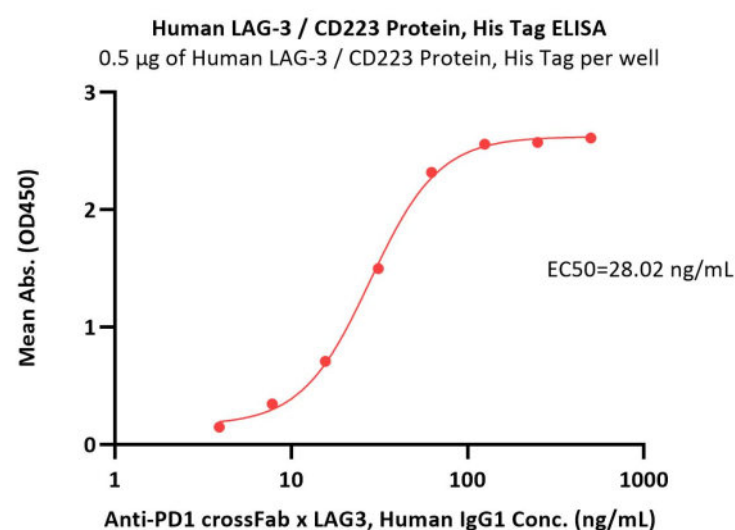
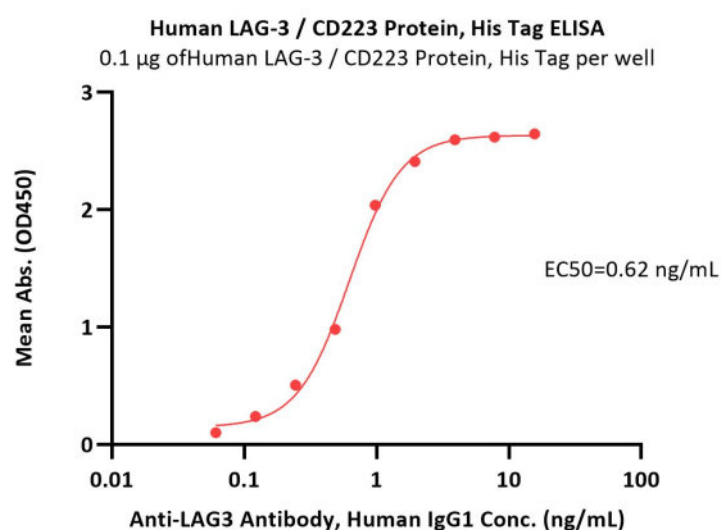
Discounts, Gifts,
and more!





Immobilized Human LAG-3 / CD223 Protein, His Tag (Cat. No. LA3-H52H3) at 2 µg/mL (100 µL/well) can bind Monoclonal Anti-Human LAG3 Antibody, Human IgG1 with a linear range of 0.1-4 ng/mL (QC tested).

Immobilized Human LAG-3 / CD223 Protein, His Tag (Cat. No. LA3-H52H3) at 2 µg/mL (100 µL/well) can bind Monoclonal Anti-Human LAG3 Antibody, Human IgG4 (S108P) with a linear range of 0.2-4 ng/mL (Routinely tested).



Immobilized Human LAG-3 / CD223 Protein, His Tag (Cat. No. LA3-H52H3) at 1 µg/mL (100 µL/well) can bind Anti-LAG3 Antibody, Human IgG1 with a linear range of 0.06-2 ng/mL (Routinely tested).

Immobilized Human LAG-3 / CD223 Protein, His Tag (Cat. No. LA3-H52H3) at 5 µg/mL, add Anti-PD1 crossFab x LAG3, Human IgG1 and then add Biotinylated Human PD-1, Fc, Avitag (Cat. No. PD1-H82F1) at 0.2 µg/mL. Detection was performed using HRP-conjugated Streptavidin (Acro, Cat. No. STN-NH913) (Routinely tested).

Background

Lymphocyte activation gene 3 protein (LAG3) is also known as CD antigen CD223 and protein FDC, which belongs to immunoglobulin (Ig) superfamily and contains 4 extracellular Ig-like domains. The LAG3 gene contains 8 exons. The sequence data, exon/intron organization, and chromosomal localization all indicate a close relationship of LAG3 to CD4. LAG3 /CD223 involved in lymphocyte activation. LAG3 /CD223 binds to HLA class-II antigens.

Clinical and Translational Updates

Discounts, Gifts, and more!

