



Synonym

AAT1, ALT, ALT1, GPT1, SGPT

Source

Human GPT (1-496) protein, His Tag(GPT-H51H3) is expressed from E. coli cells. It contains AA Met 1 - Ser 496 (Accession # [P24298](#)).

Predicted N-terminus: Met 1

Molecular Characterization

GPT(Met 1 - Ser 496)
P24298 Poly-his

This protein carries a polyhistidine tag at the C-terminus.

The protein has a calculated MW of 56.5 kDa. The protein migrates as 55-60 kDa when calibrated against [Star Ribbon Pre-stained Protein Marker](#) under reducing (R) condition (SDS-PAGE).

Endotoxin

Less than 1.0 EU per µg by the LAL method.

Purity

>85% as determined by SDS-PAGE.

Formulation

Supplied as 0.2 µm filtered solution in 20 mM Tris, 0.5 M Arginine, 0.5 M NaCl, pH8.0 with glycerol as protectant.

Contact us for customized product form or formulation.

Shipping

This product is supplied and shipped with dry ice, please inquire the shipping cost.

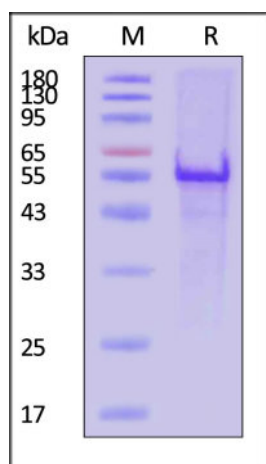
Storage

Please avoid repeated freeze-thaw cycles.

This product is stable after storage at:

- The product MUST be stored at -70°C or lower upon receipt;
- -70°C for 3 months under sterile conditions.

SDS-PAGE



Human GPT (1-496) protein, His Tag on SDS-PAGE under reducing (R) condition. The gel was stained with Coomassie Blue. The purity of the protein is greater than 85% (With [Star Ribbon Pre-stained Protein Marker](#)).

Background

This gene encodes cytosolic alanine aminotransaminase 1 (ALT1); also known as glutamate-pyruvate transaminase 1. This enzyme catalyzes the reversible transamination between alanine and 2-oxoglutarate to generate pyruvate and glutamate and, therefore, play.

Clinical and Translational Updates

Discounts, Gifts,
and more!

