



Synonym

CD8A,CD8,Leu2,MAL,p32

Source

Human CD8 alpha, His Tag(CDA-H52H3) is expressed from human 293 cells (HEK293). It contains AA Ser 22 - Asp 182 (Accession # [P01732-1](#)).

Predicted N-terminus: Ser 22

Molecular Characterization

CD8A(Ser 22 - Asp 182)
P01732-1 Poly-his

This protein carries a polyhistidine tag at the C-terminus.

The protein has a calculated MW of 19.5 kDa. The protein migrates as 26-32 kDa when calibrated against [Star Ribbon Pre-stained Protein Marker](#) under reducing (R) condition (SDS-PAGE) due to glycosylation.

Endotoxin

Less than 0.1 EU per µg by the LAL method.

Purity

>95% as determined by SDS-PAGE.

>90% as determined by SEC-MALS.

Formulation

Lyophilized from 0.22 µm filtered solution in PBS, pH7.4 with trehalose as protectant.

Contact us for customized product form or formulation.

Reconstitution

Please see Certificate of Analysis for specific instructions.

For best performance, we strongly recommend you to follow the reconstitution protocol provided in the CoA.

Storage

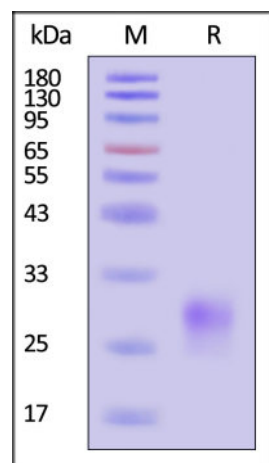
For long term storage, the product should be stored at lyophilized state at -20°C or lower.

Please avoid repeated freeze-thaw cycles.

This product is stable after storage at:

- -20°C to -70°C for 12 months in lyophilized state;
- -70°C for 3 months under sterile conditions after reconstitution.

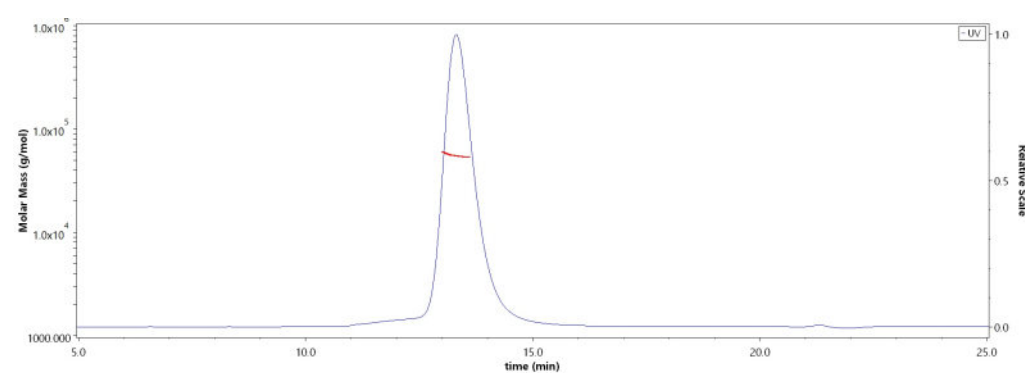
SDS-PAGE



Human CD8 alpha, His Tag on SDS-PAGE under reducing (R) condition. The gel was stained with Coomassie Blue. The purity of the protein is greater than 95% (With [Star Ribbon Pre-stained Protein Marker](#)).

Bioactivity-ELISA

SEC-MALS

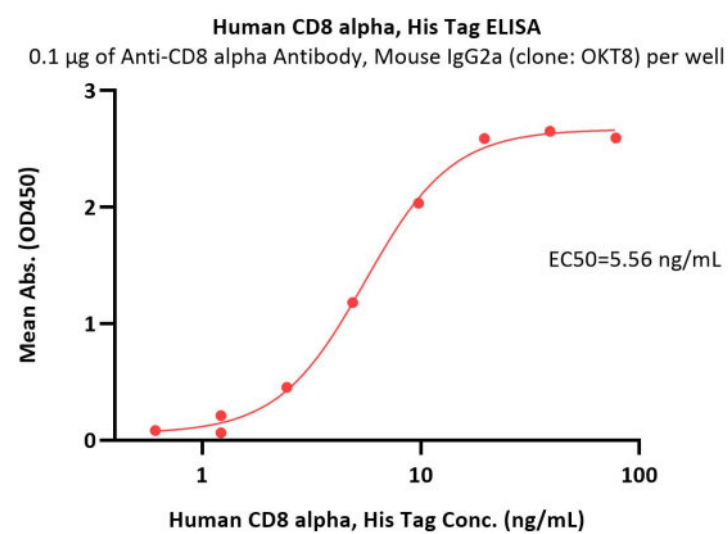
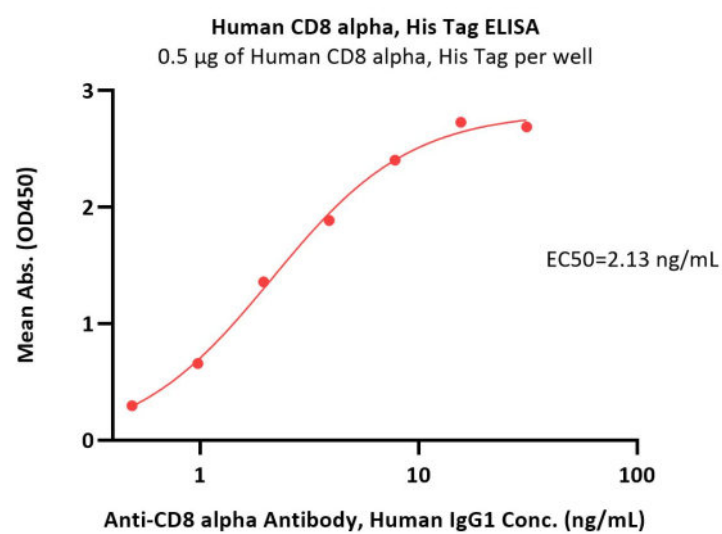


The purity of Human CD8 alpha, His Tag (Cat. No. CDA-H52H3) is more than 90% and the molecular weight of this protein is around 40-55 kDa verified by SEC-MALS.

[Report](#)

Discounts, Gifts,
and more!





Immobilized Human CD8 alpha, His Tag (Cat. No. CDA-H52H3) at 5 µg/mL (100 µL/well) can bind Anti-CD8 alpha Antibody, Human IgG1 with a linear range of 1-2 ng/mL (QC tested).

Immobilized Anti-CD8 alpha Antibody, Mouse IgG2a (clone: OKT8) at 1 µg/mL (100 µL/well) can bind Human CD8 alpha, His Tag (Cat. No. CDA-H52H3) with a linear range of 0.6-10 ng/mL (Routinely tested).

Background

Integral membrane glycoprotein that plays an essential role in the immune response and serves multiple functions in responses against both external and internal offenses. Interacts simultaneously with the T-cell receptor (TCR) and the MHC class I proteins presented by antigen presenting cells (APCs). In turn, recruits the Src kinase LCK to the vicinity of the TCR-CD3 complex. In NK-cells, the presence of CD8A homodimers at the cell surface provides a survival mechanism allowing conjugation and lysis of multiple target cells. CD8A homodimer molecules also promote the survival and differentiation of activated lymphocytes into memory CD8 T-cells.

Clinical and Translational Updates

Discounts, Gifts,
and more!

