



Synonym

CD38,T10,cADPr hydrolase 1

Source

FITC-Labeled Human CD38, His Tag (Cat. No. CD8-HF2H5) is expressed from human HEK293 cells. It contains AA Val 43 - Ile 300 (Accession # [NP_001766](#)). It is the FITC labeled form of Human CD38 Protein, His Tag (Cat. No. CD8-H5224).

Predicted N-terminus: Val 43

Molecular Characterization

CD38(Val 43 - Ile 300)
NP_001766 Poly-his

This protein carries a polyhistidine tag at the C-terminus.

The protein has a calculated MW of 30.7 kDa. The protein migrates as 40-50 kDa under reducing (R) condition (SDS-PAGE) due to glycosylation.

Conjugate

FITC

Excitation source: 488 nm spectral line, argon-ion laser

Excitation Wavelength: 488 nm

Emission Wavelength: 535 nm

Labeling

The primary amines in the side chains of lysine residues and the N-terminus of the protein are conjugated with FITC using standard chemical labeling method. The residual FITC is removed by molecular sieve treatment during purification process.

Protein Ratio

The FITC to protein molar ratio is 2-4.

Endotoxin

Less than 1.0 EU per µg by the LAL method.

Purity

>90% as determined by SDS-PAGE.

Formulation

Lyophilized from 0.22 µm filtered solution in PBS, pH7.4 with trehalose as protectant.

Contact us for customized product form or formulation.

Reconstitution

Please see Certificate of Analysis for specific instructions.

For best performance, we strongly recommend you to follow the reconstitution protocol provided in the CoA.

Storage

For long term storage, the product should be stored at lyophilized state at -20°C or lower.

Please protect from light and avoid repeated freeze-thaw cycles.

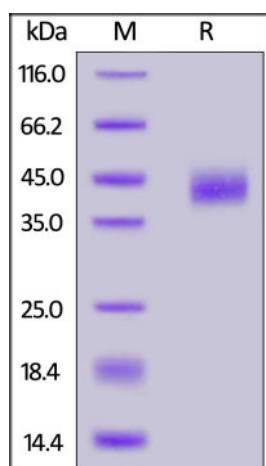
This product is stable after storage at:

- -20°C to -70°C for 12 months in lyophilized state;
- -70°C for 3 months under sterile conditions after reconstitution.

SDS-PAGE

Discounts, Gifts,
and more!





FITC-Labeled Human CD38, His Tag on SDS-PAGE under reducing (R) condition. The gel was stained with Coomassie Blue. The purity of the protein is greater than 90%.

Background

CD antigen CD38 is also known as ADP-ribosyl cyclase 1, which belongs to the ADP-ribosyl cyclase family. CD38 is expressed at high levels in pancreas, liver, kidney, brain, testis, ovary, placenta, malignant lymphoma and neuroblastoma. CD38 is a multifunctional ectoenzyme that catalyzes the synthesis and hydrolysis of cyclic ADP-ribose (cADPR) from D⁺ to ADP-ribose. These reaction products are essential for the regulation of intracellular Ca²⁺. The loss of CD38 function is associated with impaired immune responses, metabolic disturbances, and behavioral modifications. The CD38 protein is a marker of cell activation. It has been connected to HIV infection, leukemias, myelomas, solid tumors, type II diabetes mellitus and bone metabolism. CD38 has been used as a prognostic marker in leukemia.

Clinical and Translational Updates

Discounts, Gifts,
and more!

