

Rhesus macaque CDCP1 Protein, His Tag (MALS verified)

Catalog # CD1-R52H3



BIOSYSTEMS
Acro
Surprise Inside!

Synonym

CUB domain-containing protein 1, CDCP1, CD318, Membrane glycoprotein gp140, Subtractive immunization M plus HEp3-associated 135 kDa protein, SIMA135, Transmembrane and associated with src kinases, TRASK, UNQ2486, PRO5773

Source

Rhesus macaque CDCP1 Protein, His Tag (CD1-R52H3) is expressed from human 293 cells (HEK293). It contains AA Ala 29 - Thr 667 (Accession # [XP_001114659.2](#)).

Predicted N-terminus: Ala 29

Molecular Characterization

CDCP1(Ala 29 - Thr 667)
XP_001114659.2 Poly-his

This protein carries a polyhistidine tag at the C-terminus.

The protein has a calculated MW of 74 kDa. The protein migrates as 95-120 kDa when calibrated against [Star Ribbon Pre-stained Protein Marker](#) under reducing (R) condition (SDS-PAGE) due to glycosylation.

Endotoxin

Less than 1.0 EU per µg by the LAL method.

Purity

>90% as determined by SDS-PAGE.

>90% as determined by SEC-MALS.

Formulation

Lyophilized from 0.22 µm filtered solution in PBS, pH7.4 with trehalose as protectant.

Contact us for customized product form or formulation.

Reconstitution

Please see Certificate of Analysis for specific instructions.

For best performance, we strongly recommend you to follow the reconstitution protocol provided in the CoA.

Storage

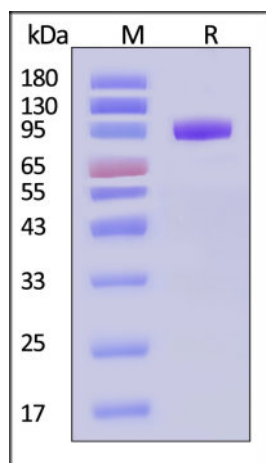
For long term storage, the product should be stored at lyophilized state at -20°C or lower.

Please avoid repeated freeze-thaw cycles.

This product is stable after storage at:

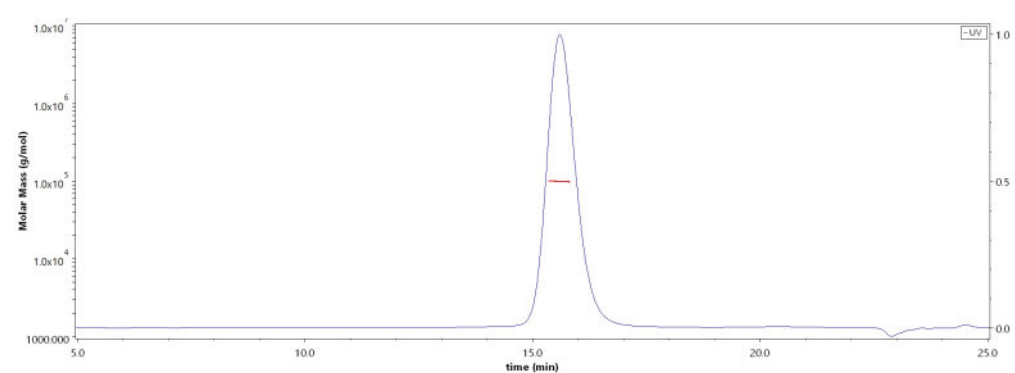
- -20°C to -70°C for 12 months in lyophilized state;
- -70°C for 3 months under sterile conditions after reconstitution.

SDS-PAGE



Rhesus macaque CDCP1 Protein, His Tag on SDS-PAGE under reducing (R) condition. The gel was stained with Coomassie Blue. The purity of the protein is greater than 90% (With [Star Ribbon Pre-stained Protein Marker](#)).

SEC-MALS



The purity of Rhesus macaque CDCP1 Protein, His Tag (Cat. No. CD1-R52H3) is more than 90% and the molecular weight of this protein is around 80-115 kDa verified by SEC-MALS.

[Report](#)

Background

CUB domain-containing protein 1, also known as CDCP1. CDCP1 is a cell surface glycoprotein that has been recognized both as a tumour marker and as a potential target to disrupt progression of cancer. CDCP1 has been shown to modulate cell-substratum adhesion and motility in colon cancer cell lines.

Discounts, Gifts,
and more!



➤ www.acrobiosystems.com

7/24/2024



Clinical and Translational Updates

Discounts, Gifts,
and more!

